

Setting Up Server Sync of files for QGIS

Charles Altendorf

GIS Planning Specialist

Hardin County Water District No.1

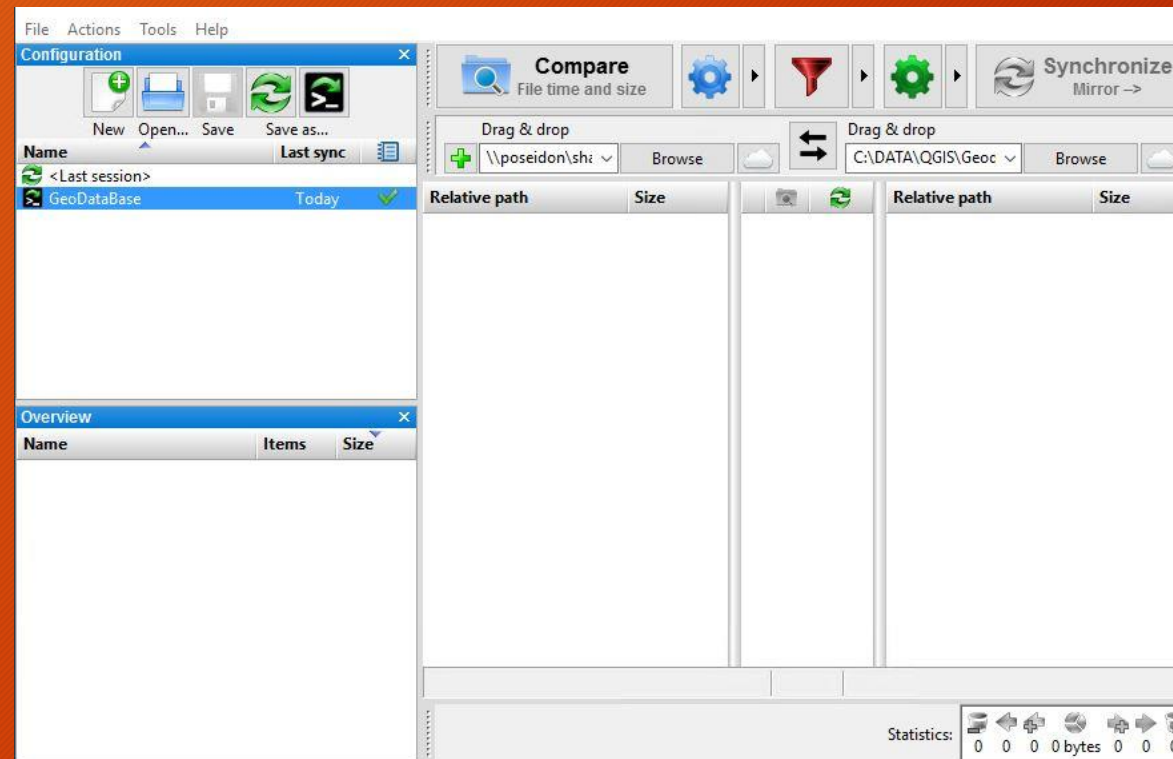
Bob Ammerman

Project Coordinator

Hardin County Water District No. 1

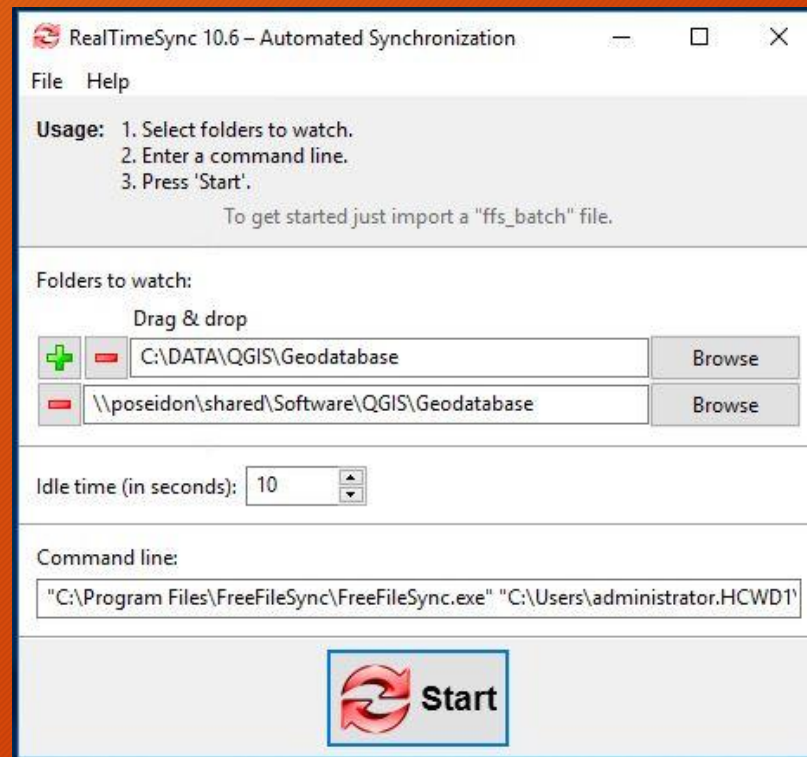
Step 1 - Using RealTimeSync, set up servers to compare then mirror

In this case, the destination Geodatabase folder on the other server is set to MIRROR changes made to the source Geodatabase folder on the original server.



Step 2- Use Automated Synchronization

Insert .ffs file created in RealTimeSync from your operation into Automated Synchronization tool



Step 3 - Verify synchronization works

As edits are made in source folder you can see on the task tray they usually synched with a couple minutes. Note: restarts of server can stop sync, so check frequently.

